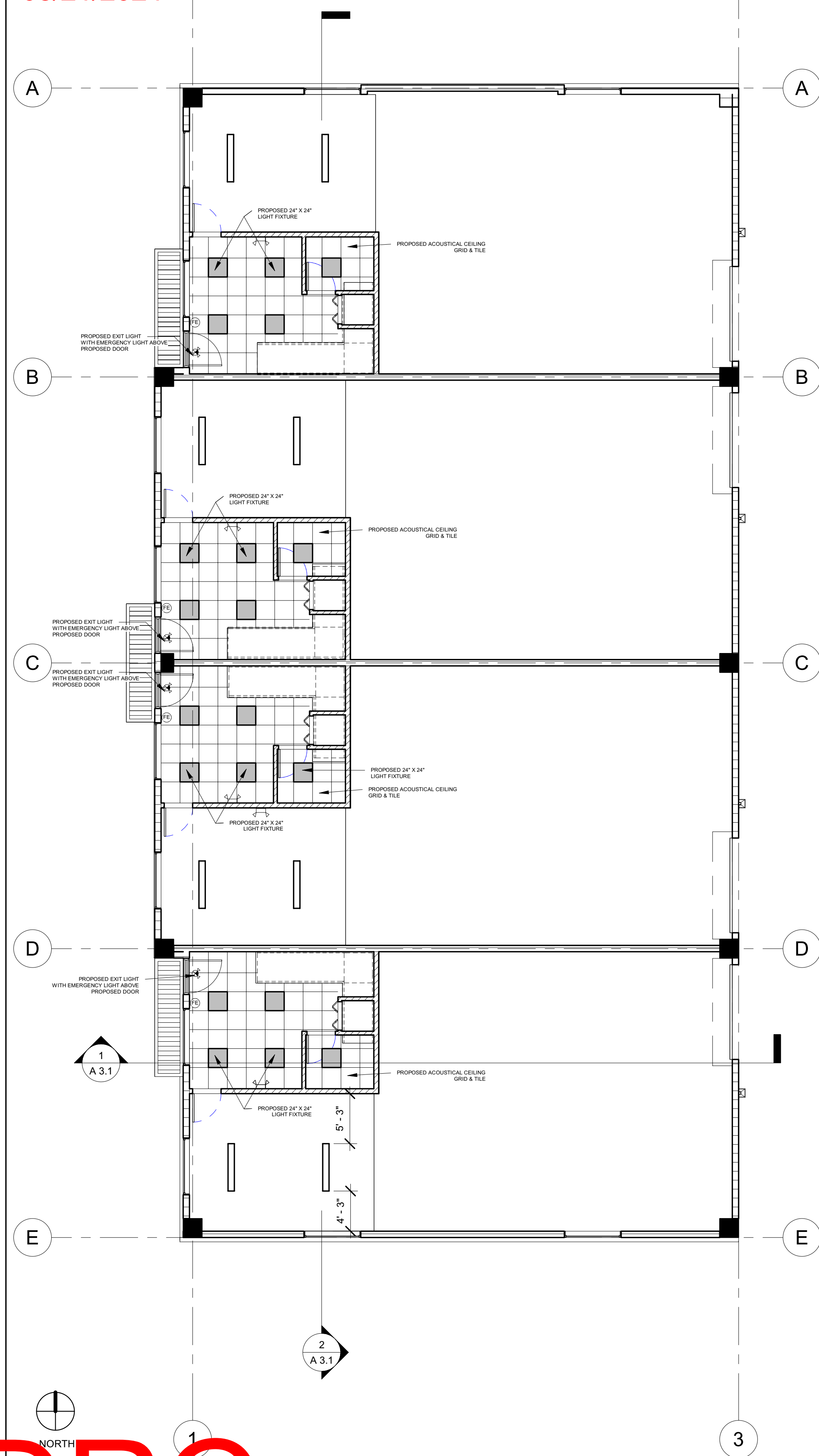




PZ23-12000055
08/21/2024




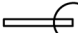









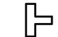






1ST FLOOR (7.51' NAVD)
1/8" = 1'-0"

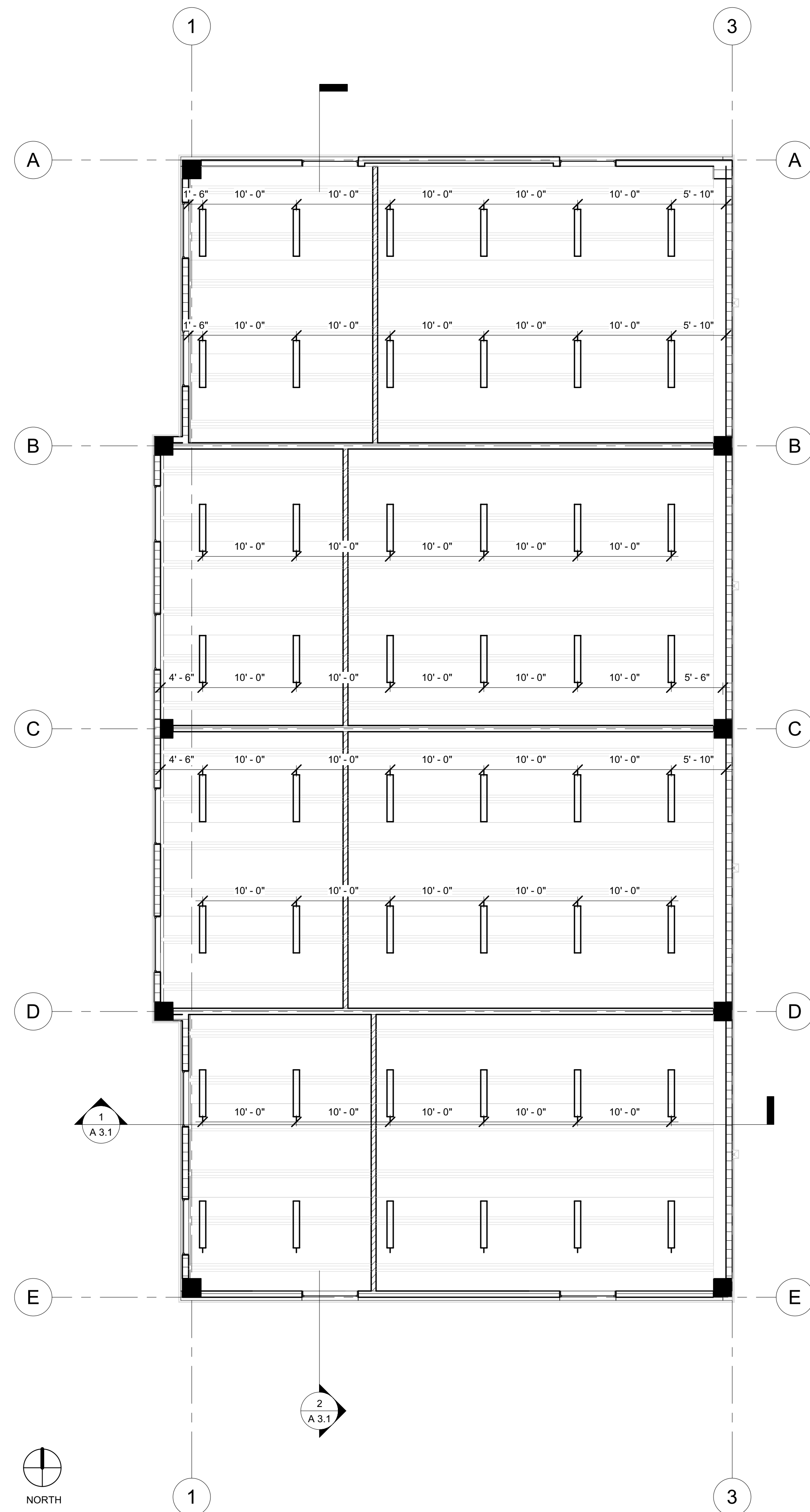
PZ23-12000055
1 PROPOSED FIRST FLOOR
12/18/2024

PZ23-12000055

ELECTRICAL SYMBOLS

- | | | | | |
|--|--|---|---|---|
|  | -DUPLEX RECEPTACLE
15 AMP/120 VOLT | -MOUNT 12" A.F.F. UNLESS OTHERWISE NOTED |  | -DOOR CHIME |
|  | -DUPLEX RECEPTACLE
15 AMP/120 VOLT | -VERIFY MOUNTING HEIGHT |  | -RECESSED LIGHT FIXTURE |
|  | -G.F.I. RECEPTACLE
15 AMP/120 VOLT | -VERIFY MOUNTING HEIGHT |  | -SURFACE MOUNTED CEILING FIXTURE |
|  | -QUAD RECEPTACLE
15 AMP/120 VOLT | -MOUNT 12" A.F.F. UNLESS OTHERWISE NOTED |  | -TRACK LIGHT, LENGTH TO SCALE WITH PLANS |
|  | -SINGLE RECEPTACLE
20 AMP/120 VOLT | -VERIFY MOUNTING HEIGHT |  | -FLUORESCENT FIXTURE, LENGTH TO SCALE WITH PLANS |
|  | -EQUIPMENT RECEPTACLE | -MOUNT 18" A.F.F. UNLESS OTHERWISE NOTED
VOLTAGE AND AMPACITY AS PER PLANS |  | -PENDANT MOUNTED FIXTURE, PROVIDE BRACING |
|  | -15 AMP/120 VOLT | -MOUNT 44" A.F.F. UNLESS OTHERWISE NOTED |  | -WALL MOUNTED FIXTURE |
|  | -SWITCH, THREE-WAY
15 AMP/120 VOLT | -MOUNT 44" A.F.F. UNLESS OTHERWISE NOTED |  | -LANDSCAPE LIGHTS |
|  | -SWITCH, MOTOR RATED
15 AMP/120 VOLT | -RATED FOR USE WITH TOTAL MOTOR LOADS |  | -OUTDOOR FLOOD LIGHTS, 100 WATT PAR38 LAMPS |
|  | -SWITCH, FAN DIMMER
120 VOLT RHEOSTAT | -SIZE DIMMER WITH TOTAL MOTOR LOAD |  | -MOTOR / FAN |
|  | -DOOR JAMB LIGHT SWITCH | -VERIFY EXACT MOUNTING HEIGHT, DOOR
SWING AND LOCATION |  | -CEILING FAN |
|  | -TELEPHONE OUTLET | |  | -DOORBELL |
|  | -DATA/PHONE OUTLET | |  | -EXIT SIGN WITH EMERGENCY LIGHT ABOVE EXIST DOOR TO REMAIN. |
|  | -TELEVISION OUTLET | |  | -ACOUSTICAL CEILING GRID & TILE. |
|  | -D.S.S. SATELLITE OUTLET | |  | -DENOTES NEW DRYWALL CEILING. |
|  | -KEYPAD, LOW VOLTAGE
CONTROL | |  | -LIGHT FIXTURE PER BANK STANDARD |
|  | -DISCONNECT | -SIZED AND FUSED AS PER EQUIPMENT
NAME PLATE RATING | | |
|  | -SMOKE DETECTOR | -CONNECT TO BATHROOM LIGHTING CIRCUIT | | |

3	ELECTRICAL SYMBOLS
---	--------------------



2ND FLOOR PLAN (+10'-8")
1/8" = 1'-0"



LARose Architects, Inc.
ARCHITECTURE & PLANNING
1000 SHERIDAN STREET ST. 158
PEMBROKE PINES, FL 33024
(OFF.) - 305-403-7926
CELL# - 786-543-0851
E-MAIL: LAROSA@LAROSAARCHITECTCT'S.COM

ing
AR#-0017852
ARosa

-Registered Architect

Revision			
#	REV	DATE	BY

PROPOSED WAREHOUSE FOR:
REGANZANI GROUP LLC
VACANT PROPERTY, SW 3RD STREET,
POMPANO BEACH, FL, 33069

SEAL: AR 0117852
Luis La Rosa
Rosa

Digitally signed by Luis La Rosa
Date: 2024.05.29 17:39:14 -0400

100% CONSTRUCTION DOCUMENTS	DRAWN:	Author
	CHECKED:	Checker
	DATE:	11/07/2023
	SCALE:	AS NOTED
	JOB. NO.:	023-042
	SHEET:	
	A 1.4	
	OF:	SHEETS:

$$1/8'' = 1'-0''$$